

PRODUCT SHEET

Kyoto



WOUD

Kyoto rug 90 x 140

Designed by AD Miller

The hand-tufted wool rug, Kyoto, takes its inspiration from the distinctive pattern found in traditional raked Japanese rock gardens. The rug comes in different sizes, each with a hand-cutted individual design. Available in a natural grey and off white tone, Kyoto provides a complementing base for a furniture setting while also bringing a sense of the textured landscape inside.

Year

2021

Category / type

Textiles / rug

Materials

80% wool and 20% cotton

Specifications

Handmade loom rug

Soft cut-pile surface

Mothproof

Hand-tufted on cotton fabric

Latex backing on cotton fabric (2 layered backing)

Weight per m²

3,5 kg

Country of origin

India

Packaging

No. of boxes: 1 box

L 1000 x D 230 x H 180 mm

L 39.3 x D 9.0 x H 7.0"

Weight

6 kg (6,4 kg incl. packaging)

Care instructions

All our recommended care guides can be downloaded [here](#).



Item no / colour

160090 Grey (90 x 140)

160094 Off white (90 x 140)

Product dimensions

L 1400 x W 900 x H 18 mm

L 55.1 x W 35.4 x H 0.7"

Kyoto rug 80 x 200

Designed by AD Miller

The hand-tufted wool rug, Kyoto, takes its inspiration from the distinctive pattern found in traditional raked Japanese rock gardens. The rug comes in different sizes, each with a hand-cutted individual design. Available in a natural grey and off white tone, Kyoto provides a complementing base for a furniture setting while also bringing a sense of the textured landscape inside.

Year

2021

Category / type

Textiles / rug

Materials

80% wool and 20% cotton

Specifications

Handmade loom rug

Soft cut-pile surface

Mothproof

Hand-tufted on cotton fabric

Latex backing on cotton fabric (2 layered backing)

Weight per m²

3,5 kg

Country of origin

India

Packaging

No. of boxes: 1 box

L 850 x D 200 x H 220 mm

L 33.4 x D 7.8 x H 8.6"

Weight

7,5 kg (7,8 kg incl. packaging)

Care instructions

All our recommended care guides can be downloaded [here](#).



Item no / colour

160091 Grey (80 x 200)

160095 Off white (80 x 200)

Product dimensions

L 800 x W 2000 x H 18 mm

L 31.5 x W 78.7 x H 0.7"

Kyoto rug 170 x 240

Designed by AD Miller

The hand-tufted wool rug, Kyoto, takes its inspiration from the distinctive pattern found in traditional raked Japanese rock gardens. The rug comes in different sizes, each with a hand-cutted individual design. Available in a natural grey and off white tone, Kyoto provides a complementing base for a furniture setting while also bringing a sense of the textured landscape inside.

Year

2021

Category / type

Textiles / rug

Materials

80% wool and 20% cotton

Specifications

Handmade loom rug

Soft cut-pile surface

Mothproof

Hand-tufted on cotton fabric

Latex backing on cotton fabric (2 layered backing)

Weight per m²

3,5 kg

Country of origin

India

Packaging

No. of boxes: 1 box

L 1800 x D 200 x H 250 mm

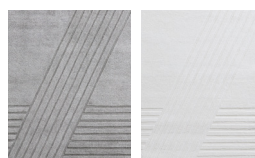
L 70.8 x D 7.8 x H 9.8"

Weight

22,8 kg (23,6 kg incl. packaging)

Care instructions

All our recommended care guides can be downloaded [here](#).



Item no / colour

160092 Grey (170 x 240)

160096 Off white (170 x 240)

Product dimensions

L 2400 x W 1700 x H 18 mm

L 94.4 x W 6.9 x H 0.7"

Kyoto rug 200 x 300

Designed by AD Miller

The hand-tufted wool rug, Kyoto, takes its inspiration from the distinctive pattern found in traditional raked Japanese rock gardens. The rug comes in different sizes, each with a hand-cutted individual design. Available in a natural grey and off white tone, Kyoto provides a complementing base for a furniture setting while also bringing a sense of the textured landscape inside.

Year

2021

Category / type

Textiles / rug

Materials

80% wool and 20% cotton

Specifications

Handmade loom rug

Soft cut-pile surface

Mothproof

Hand-tufted on cotton fabric

Latex backing on cotton fabric (2 layered backing)

Weight per m²

3,5 kg

Country of origin

India

Packaging

No. of boxes: 1 box

L 2050 x D 300 x H 300 mm

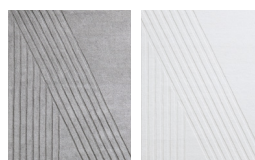
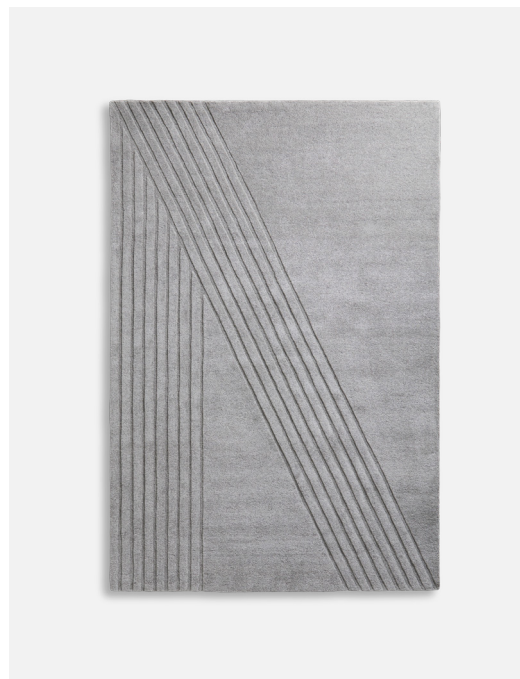
L 80.7 x D 11.8 x H 11.8"

Weight

29,6 kg (30,2 kg incl. packaging)

Care instructions

All our recommended care guides can be downloaded [here](#).



Item no / colour

160093 Grey (200 x 300)

160097 Off white (200 x 300)

Product dimensions

L 3000 x W 2000 x H 18 mm

L 118.1 x W 78.7 x H 0.7"

Kyoto rug Ø200

Designed by AD Miller

The hand-tufted wool rug, Kyoto, takes its inspiration from the distinctive pattern found in traditional raked Japanese rock gardens. The rug comes in different sizes, each with a hand-cutted individual design. Available in a natural grey and off white tone, Kyoto provides a complementing base for a furniture setting while also bringing a sense of the textured landscape inside.

Year

2023

Category / type

Textiles / rug

Materials

80% wool and 20% cotton

Specifications

Handmade loom rug

Soft cut-pile surface

Mothproof

Hand-tufted on cotton fabric

Latex backing on cotton fabric (2 layered backing)

Weight per m²

3,5 kg

Country of origin

India

Packaging

No. of boxes: 1 box

L 2000 x D 210 x H 210 mm

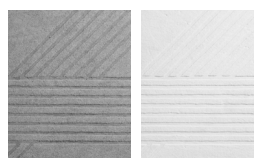
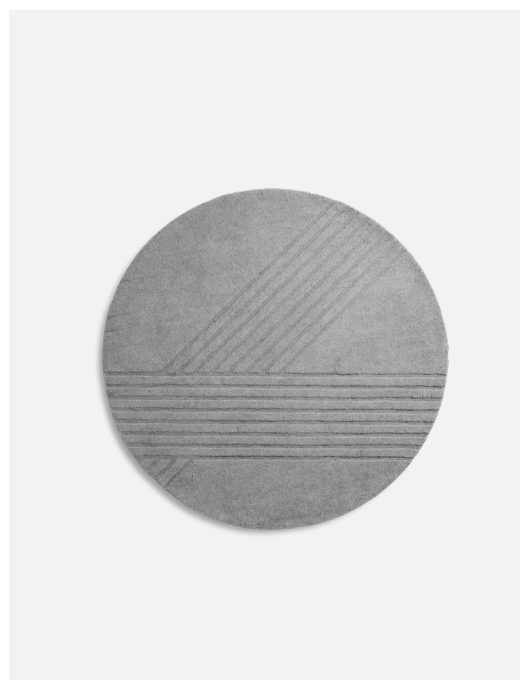
L 78.7 x D 8.2 x H 8.2"

Weight

14,5 kg (15,5 kg incl. packaging)

Care instructions

All our recommended care guides can be downloaded [here](#).



Item no / colour

160084 Grey (Ø200)

160087 Off white (Ø200)

Product dimensions

Ø 2000 x H 18 mm

Ø 78.7 x H 0.7"

Kyoto rug Ø250

Designed by AD Miller

The hand-tufted wool rug, Kyoto, takes its inspiration from the distinctive pattern found in traditional raked Japanese rock gardens. The rug comes in different sizes, each with a hand-cutted individual design. Available in a natural grey and off white tone, Kyoto provides a complementing base for a furniture setting while also bringing a sense of the textured landscape inside.

Year

2023

Category / type

Textiles / rug

Materials

80% wool and 20% cotton

Specifications

Handmade loom rug

Soft cut-pile surface

Mothproof

Hand-tufted on cotton fabric

Latex backing on cotton fabric (2 layered backing)

Weight per m²

3,5 kg

Country of origin

India

Packaging

No. of boxes: 1 box

L 2530 x D 240 x H 240 mm

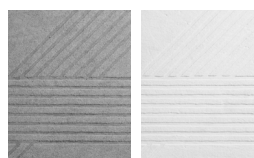
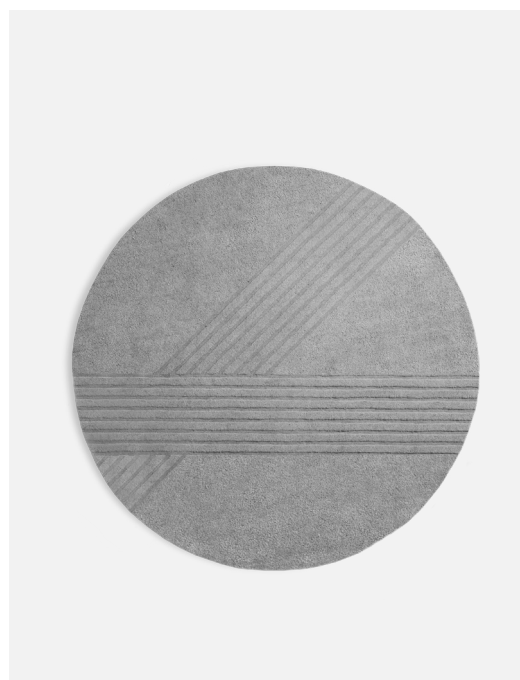
L 99.6 x D 9.4 x H 9.4"

Weight

22,5 kg (23,2 kg incl. packaging)

Care instructions

All our recommended care guides can be downloaded [here](#).



Item no / colour

160085 Grey (Ø250)

160088 Off white (Ø250)

Product dimensions

Ø 2500 x H 18 mm

Ø 98.4 x H 0.7"

Kyoto rug 210 x 340

Designed by AD Miller

The hand-tufted wool rug, Kyoto, takes its inspiration from the distinctive pattern found in traditional raked Japanese rock gardens. The rug comes in different sizes, each with a hand-cutted individual design. Available in a natural grey and off white tone, Kyoto provides a complementing base for a furniture setting while also bringing a sense of the textured landscape inside.

Year

2023

Category / type

Textiles / rug

Materials

80% wool and 20% cotton

Specifications

Handmade loom rug

Hand-cutted piles

Soft cut-pile surface

Mothproof

Hand-tufted on cotton fabric

Latex backing on cotton fabric (2 layered backing)

Weight per m²

3,5 kg

Country of origin

India

Packaging

No. of boxes: 1 box

L 2100 x D 270 x H 270 mm

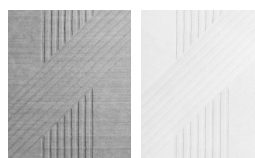
L 82.6 x D 10.6 x H 10.6"

Weight

24 kg (29,2 kg incl. packaging)

Care instructions

All our recommended care guides can be downloaded [here](#).



Item no / colour

160086 Grey (210 x 340)

160089 Off white (210 x 340)

Product dimensions

L 3400 x W 2100 x H 18 mm

L 133.8 x W 82.6 x H 0.7"

Kyoto rugs

Designed by AD Miller

English text

The hand-tufted wool rug, Kyoto, takes its inspiration from the distinctive pattern found in traditional raked Japanese rock gardens. Designed in the sphere of Japanese aesthetics and Scandinavian design, the rug communicates a shared simplicity and honesty. With its minimalistic linear cut piles, the design provides a quiet sense of movement as the engraved lines travel in straight and diagonal motions. Evoking a feel of ripples in water, with an aim to bring the tranquillity of these zen gardens into your space.

The rug comes in different sizes and shapes, each with an individual design. Available in natural tones, Kyoto provides a complementing base for a furniture setting while also bringing a sense of the textured landscape inside.

Designed by AD Miller

AD Miller is a Los Angeles based multi-disciplinary studio founded by architect and designer Adam Miller. His design philosophy is rooted in a holistic approach that encompasses the practice of designing at all scales - from architecture to lighting and furniture design. Each project is approached with the aim of creating powerful yet quiet gestures while emphasizing honesty in materiality.

Danish text

Det håndtuftede uldtæppe, Kyoto, er inspireret af de karakteristiske mønstre, der kan findes i de traditionelle, nænsomt revet japanske sten- og grushaver. Tæppet, der er designet i mødet mellem japansk æstetik og skandinavisk design, kommunikerer en fælles enkelhed og ærlighed. Med sine minimalistiske, lineære fordybninger får designet et delikat udtryk, der bliver vakt til live af de indgravede linjer, som bevæger sig i lige og diagonale bevægelser. De fremkalder en fornemmelse af krusninger i vandet, som er med til at føre roen fra zenhaverne ind i rummet.

Tæppet findes i flere størrelser og former, som hver har sit individuelle design specielt tilpasset til formatet. Med sin naturlige grå og hvide nuance danner Kyoto en ubesværet, komplementerende base for resten af interiøret, samtidig med at det bringer en fornemmelse af de strukturerede landskaber med indenfor.

Designet af AD Miller

AD Miller er et multidisciplinært studie i Los Angeles, etableret af arkitekt og designer Adam Miller. Hans designfilosofi er forankret i en holistisk tilgang, der omfatter designs i alle skalaer - fra arkitektur til belysning- og møbeldesign. Hvert projekt har et tydeligt formål. Nemlig at skabe kraftfulde, men rolige udtryk, der evner at fremhæve ærligheden i materialet.