

## Cestita Metálica

Miguel Milá. 1962

Table Lamps

  
SANTA & COLE



With the constructive strength of its larger counterpart, and also apt to lend significance to its location in any corner or on any shelf, the Cestita Metálica does not incorporate a handle, a sign that it is predisposed to remain wherever it is placed. A splendid bibelot that refines all that it lights up.

### General description:

Stainless steel structure.

White opal glass lampshade.

Electric cable length: 2,25 m / 88.6"

### Light source:

Recommended light source (dimmable):

LED bulb: 6 W

Other light sources: Max. 40 W

E27 - E26

(Max. hgt. 105 mm / 4.1")

Light source not included.

Dimmer included.

Compatible with bulbs of the Energy efficiency class (E.E.C): A++... E.

Suitable only for indoor use.

Always use the light source recommended or equivalent.

Input voltage: 100, 120, 230 Vac.

(50 Hz / 60 Hz). According to destination

### Approximate weight (unpacked):

2,5 kg / 5.51 lb

### Regulations:

CE

UNE-EN 60598

UNE-EN 55015

UNE-EN 60529

UL

Dry location only

UL-153

E-352592

## Cestita Metálica

Miguel Milá. 1962

Table Lamps

  
SANTA & COLE

### Maintenance:

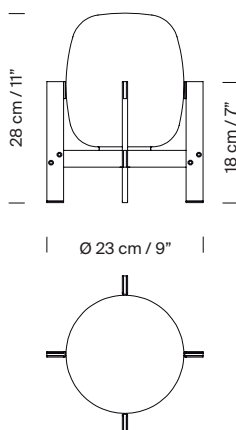
Clean with a smooth cloth. Do not use ammonia, solvents or abrasive cleaning products.

### Others:

The lamp is delivered in one package.

The assembly instructions are delivered with the product.

### Model: sizes in cm



### Collection:

Table lamps



Cesta



Cestita



Cesta Batería



Cesta Metálica



Cestita Metálica



Wally

Apliques

Pendant lamps



Globo Cesta



Globo Cestita